

Western Mariner

The Magazine of the Coast

January 2008 ▶ Volume 5 ▶ Number 11

Features

COASTAL RENAISSANCE ▶ 13

First Super C-class Ferry Arrives in BC

By David Rahn

ISLAND SKY ▶ 14

Island-class Ferry Roll-out & Load-out – A Technical Challenge

By Rob Morris

2008 WESTERN SHIPYARD DIRECTORY ▶ 22

Wash-Water Clean-up ▶ 34

BC Shipyards Put ‘Best Management’ into Practice

By Rob Morris

Coastal Places ▶ 40

The Shipyard on Poplar Island

By Rob Morris

Coastal Memories ▶ 44

Ingenuity at Sea

By Ron McLeod

Books for Mariners ▶ 45

Reviews by Rob Morris

Departments

From the Editor's Desk 4

Big Floods

By Rob Morris

From the Publisher's Desk. 4

History Past and Present

By David Rahn

Letters. 5

From the Galley Table 10

By David Rahn

A Letter from Home 11

Swinging the Lead

By Mrs. Amor de Cosmos

Name This Spot 21

Deck Watch 33

Quiz 37: Air Pressure

By Capt. Barb Howe

Safety Net 42

Recognizing Progress

By Gina Johansen

Mariner's News. 47

??????

In the Shipyards 48

Poplar Island Marine Services, Sea-Tec

Fabricators & Marine Lift, Nanaimo

Shipyards, Pacific Boatworks, Covey

Marine, Daigle marine/Eaglecraft

Boats, Arrow Marine Services

Calendar 52

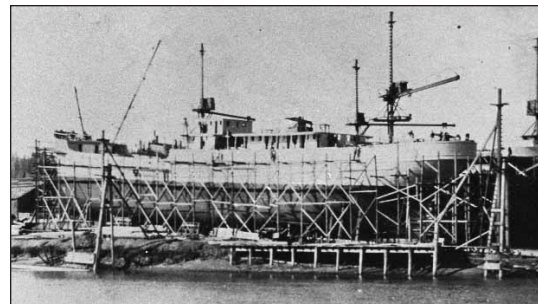
Classifieds. 53



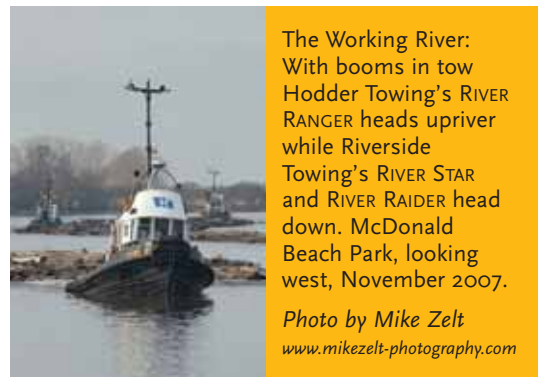
14



34



40



The Working River:
With booms in tow
Hodder Towing's RIVER
RANGER heads upriver
while Riverside
Towing's RIVER STAR
and RIVER RAIDER head
down. McDonald
Beach Park, looking
west, November 2007.

Photo by Mike Zelt
www.mikezelt-photography.com